



Quick Installation Guide

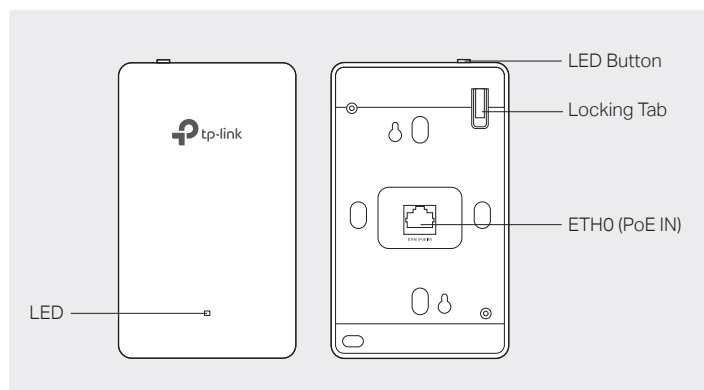
AC1200 Wireless MU-MIMO Wall Plate Access Point

EAP225-Wall



Hardware Overview

Front Panel & Rear Panel



LED Indicator

On: Working normally/Initializing.

Off: Working abnormally/Power off/LED is turned off.

Flashing:

Initialization: The LED flashes twice after initialization is complete.

Upgrade: The LED flashes once per second while upgrading.

Reset: The LED flashes five times in quick session during the reset. The EAP will then reboot.

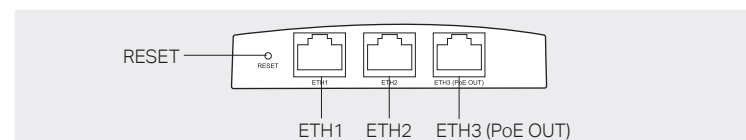
ETH0 (PoE IN) Port

Connected to a PSE (Power Sourcing Equipment), such as a PoE switch, for both data transmission and Power. The device supports 802.3af/at inputs.

LED Button

Press the LED button to turn on/off the LED.

Bottom View



RESET Button

With the device powered on, press and hold the button for 5 seconds to reset the EAP to its factory defaults.

ETH1 & ETH2 Port

Connected to a client device to transmit data.

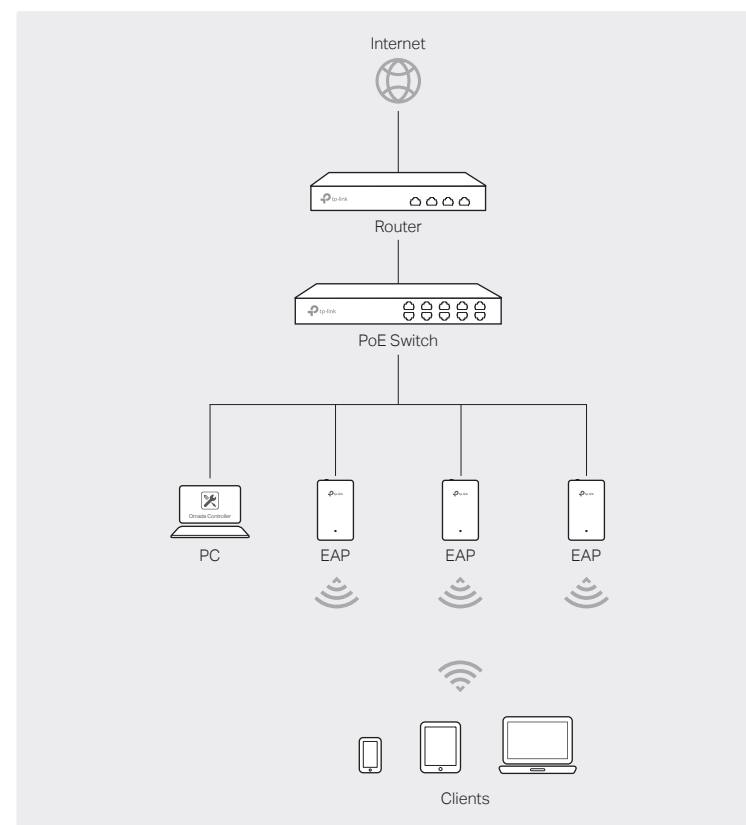
ETH3 (PoE OUT) Port

Connected to a client device to transmit data and supply power (PoE Passthrough). The PoE OUT feature requires 802.3at PoE+ input and the maximum output is 13W.

Note: To power an 802.3af device to the LAN, you must use 802.3 at PoE+ input.

1 Network Topology

- A DHCP server (typically a router) with DHCP function enabled is required to assign IP addresses to the EAPs and clients in your local network.
- The EAP225-Wall can only be powered by a PSE device, such as a PoE switch. Connect the PoE switch to the ETH0 (PoE IN) port with an Ethernet cable.



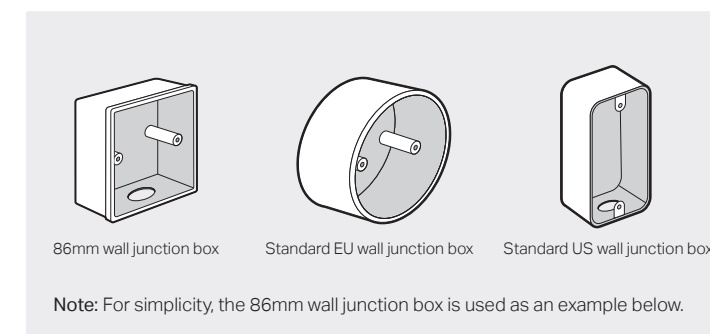
2 Pre-Installation Checklist

Before installation, be sure that you have the following items:

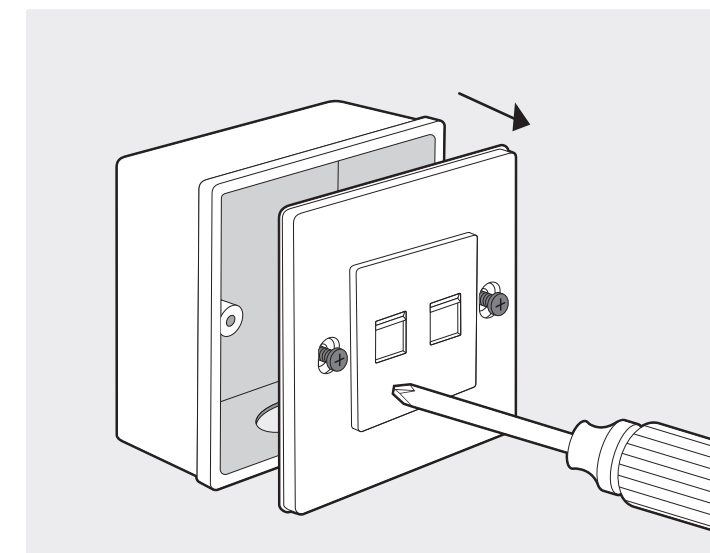
1. A pre-installed wall junction box
2. An RJ45 plug
3. A Phillips screwdriver
4. A PoE switch

3 Installation Steps

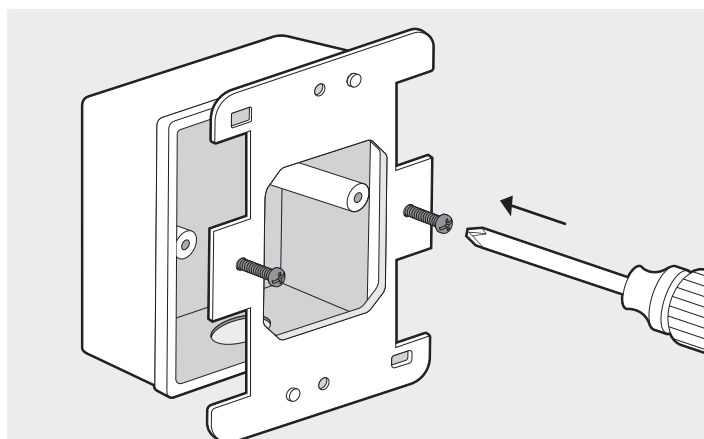
EAP225-Wall can be mounted into an 86mm wall junction box, a standard EU wall junction box, or a standard US junction box. The junction box should be pre-installed with a running-in-wall Ethernet cable connected to a PoE switch.



1. Detach the faceplate of the junction box with a Phillips screwdriver.



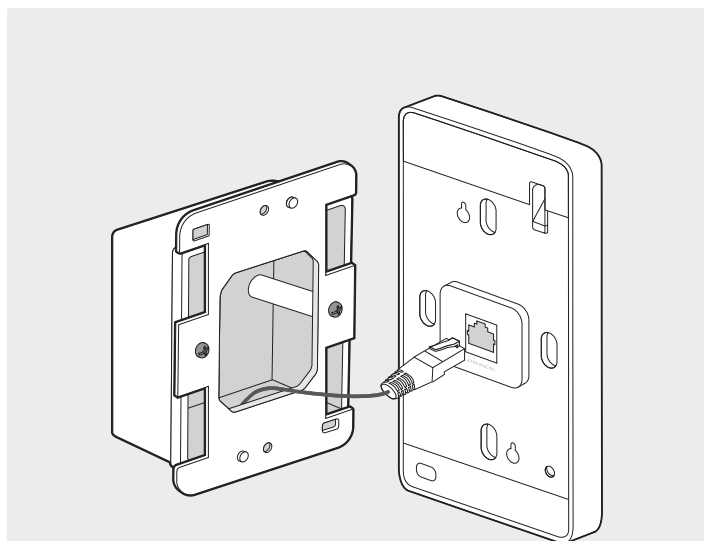
2. Insert the enclosed screws and tighten them with a philips screwdriver to secure the mounting bracket.



Note:

- Do not over tighten the screws.
- If the enclosed screws do not fit the junction box, use the screws attached to the junction box instead.
- When mounting the bracket to a standard US junction box, use the holes on the top and bottom side.

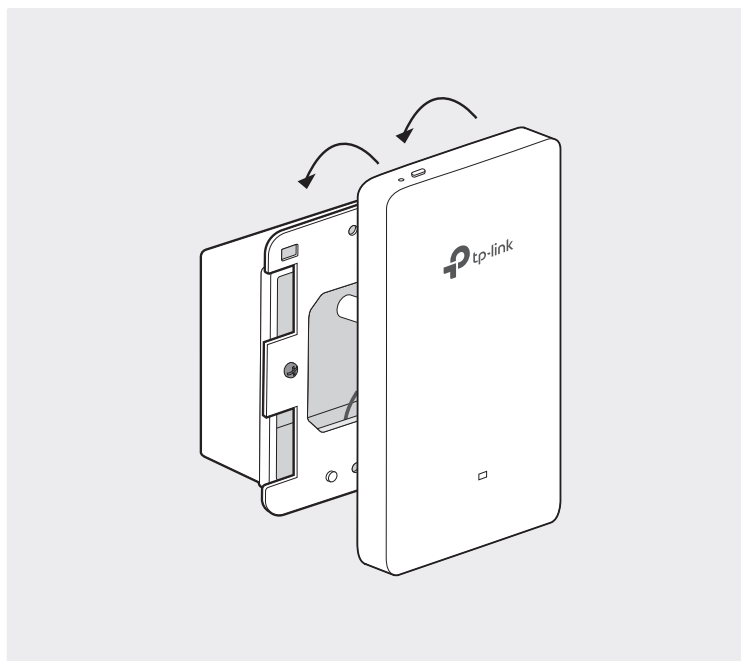
3. Connect the Ethernet cable inside the junction box to an RJ45 plug. Then connect the cable to the ETH0 (PoE IN) port. Position the Ethernet cable to ensure it is not strained.



Note:

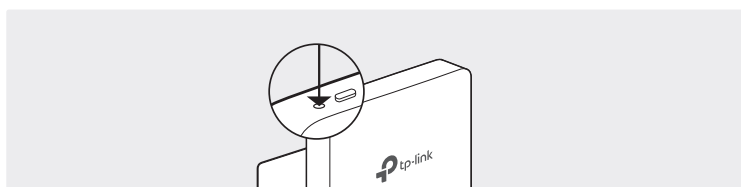
If the junction box does not have enough room to accommodate the EAP, replace the junction box with an open-end junction box or a deeper one.

4. Attach the EAP to the mounting bracket by aligning the two mounting studs on the mounting bracket with the large opening of the slots on the EAP. Press and slide the EAP down until it locks into place.



Tip:

To remove the EAP from the mounting bracket, insert a metal stick into the hole next to the LED button to release the Locking Tab. Slide the EAP upwards and pull it out to detach it from the mounting bracket, as shown below.



4 Software Configuration

The EAP supports two configuring options:

- To configure and manage mass EAPs via centralized controller software, please refer to **Option 1**.
- To configure a single EAP via a web browser directly, please refer to **Option 2**.

Option 1: Via Omada Controller

Step 1: Installing Omada Controller

On the PC, download the Omada Controller installation file from <http://www.tp-link.com/en/download/EAP-Controller.html>. Run the file and follow the wizard to install the Omada Controller.

Step 2: Configuring Omada Controller

Launch the Omada Controller and follow the step-by-step instructions to complete the Quick Setup. After the wizard is finished, a login screen will appear.

Step 3: Logging in to Omada Controller

Enter the username and password you created and click **Log in**. Then you can further configure the Omada Controller.

For detailed configurations, please visit <https://www.tp-link.com/support> to download the User Guide of Omada Controller in the download center.

Option 2: Via Web Browser

Step 1: Connecting to the EAP Device

Power on the EAP and connect wirelessly by using the default SSID (format: TP-Link_2.4GHz/5GHz_XXXXXX) printed on the product label.

Step 2: Logging in to the EAP Device

Launch a web browser and enter <http://tplinkeap.net> in the address bar. Use **admin** for both Username and Password to log in.

Step 3: Configuring the EAP Device

Set up a new Username and Password for secure management purpose. Modify the wireless parameters and reconnect your wireless devices to the new wireless network.

For detailed configurations, please visit <https://www.tp-link.com/support> to download the User Guide of EAP in the download center.



For technical support, User Guide and other information, please visit <https://www.tp-link.com/support>, or simply scan the QR code.

The products of TP-Link partly contain software code developed by third parties, including software code subject to the GNU General Public License ("GPL"). As applicable, the terms of the GPL and any information on obtaining access to the respective GPL Code used in TP-Link products are available to you in GPL-Code-Centre under (<http://www.tp-link.com/en/support/gpl/>). The respective programs are distributed WITHOUT ANY WARRANTY and are subject to the copyrights of one or more authors. For details, see the GPL Code and other terms of the GPL.